

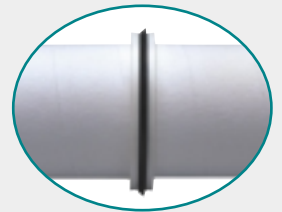
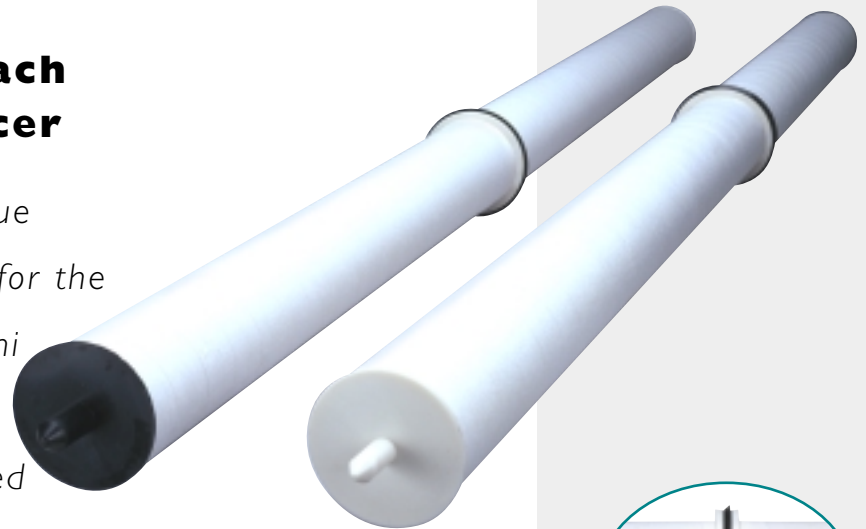


PERRY EQUIPMENT CORPORATION

ISO 9001

PECO® Series PGC Peach Gemini Filter Coalescer

The Peco Series PGC is a unique design element manufactured for the innovative Peco PEACH® Gemini PuraSep®. This multifunctional coalescing tube is manufactured using the patented Peco Engineered Media (PEM) and Peco Engineered Applied Conical Helix (PEACH®) process. The PGC has the ability to double filter and double coalesce hard to remove pipeline solid and liquid contaminants.



detail of the
Chevron Seal

**Another
innovative PECO®
product!**

Construction

- **Media:** PEM (Peco Engineered Media) — Polyester*
- **Core:** None
- **End Caps:** Polyester
- **Gasket:** Chevron seal — Buna-n standard

* For applications where polyester material is not compatible with service (ie. trace liquid amine in natural gas), a polypropylene material is available.

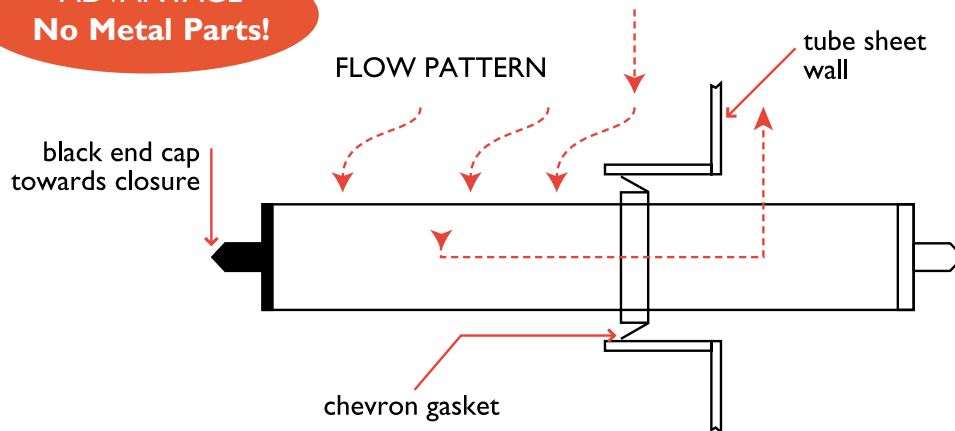
Operational Data

- **Recommended:** ≤ 2 psid
- **Recommended Element Change:** 10-14 psid
- **Maximum Operating Temp:** 240° F
- **Absolute Removal Efficiencies:** 0.3 μ
- **Collapse Strength:** 30 psid @ 100° F
25 psid @ 150° F

PRODUCT ADVANTAGES

- Element sealed on both ends. No possibility of bypass around the ends.
- No metal parts. All synthetic construction.
- Absolute efficiencies (Absolute efficiencies may vary based on actual field application.)
- High solids loading
- No binders for more direct chemical compatibility.
- End cap design assures correct installation of element.
- Hydrophilic and Oleophilic media means greater coalescing efficiencies at high rates.
- Universal mounting plate. No bolts or tools required to seal the elements.
- Can be incinerated.
- Faster element change out time.
- Single tube change out.
- Double filtration in a single tube.

ADVANTAGE No Metal Parts!



The chevron gasket assures a positive seal and causes the sealing surface to be cleaned every time the element is changed. Eliminates the problem of gaskets sticking on the tube sheet end.

The gas enters the element outside-to-inside as with conventional solids removal filters. Any liquids entrained in the gas are "pre" coalesced in this outside-to-inside flow pattern. The gas then travels through the inside diameter of the tube where large "pre" coalesced droplets, drop out and drain through the element's porous wall. The preconditioned gas then passes through the element's wall from inside-to-outside. Any entrained mist droplets are polished from the gas.

Nomenclature



e-mail:
fs@pecousa.com
web site:
www.pecousa.com

Corporate Offices & Plant

PERRY EQUIPMENT CORPORATION
Wolters Industrial Park
P.O. Box 640
Mineral Wells, Texas 76068
Telephone: 940-325-2575
800-877-PECO
Telefax: 940-325-4622
e-mail: fs@pecousa.com

Houston Branch Office

1758 West Sam Houston Parkway N.
Houston, Texas 77043-3115
Telephone: 713-973-2575
Telefax: 713-467-0475
e-mail: hou@pecousa.com

Perry Equipment Italiana S.R.L.

via Camozzi, 106
24121 Bergamo (BG)
Italy
Telephone: 3903-523-6340
Telefax: 3903-523-6380
e-mail: peco.italy@tin.it

Perry Equipment De Mexico

Parque Industrial Benito Juárez
Acceso III, 4-A
Querétaro, Querétaro, México C.P. 76120
Teléfono: 52-42-10-34-89
Telefax: 52-42-10-90-39

Parque Industrial Querétaro
Calle Cerrada La Noria #108
Santa Rosa Jaurequi
Querétaro, Querétaro, México C.P. 76220

Perry Equipment Corporation

S.E. ASIA REGIONAL OFFICE
35-4 Jalan SP2/I
Taman Serdang Perdana, Seksyen 2,
43300 Seri Kembangan
Selangor D.E., Malaysia
Telephone: 603-8941-2366
Telefax: 603-8941-1366
e-mail: pecosea@po.jaring.my

Peco Filters, Ltd.

1351 Hastings Crescent S.E.
Calgary, Alberta
Canada T2G-4C8
Telephone: 403-243-6700
Telefax: 403-287-9304
e-mail: 103727,3572@compuserve.com

European Offices

PERRY EQUIPMENT LTD.
Brunel Business Court
Brunel Way, Thetford
Norfolk IP24 1HP
England
Telephone: 01842 821000
Telefax: 01842 821050
e-mail: sales@perry-equipment.co.uk
www.perry-equipment.co.uk

Please refer to
www.pecousa.com
for most current
literature edition.