



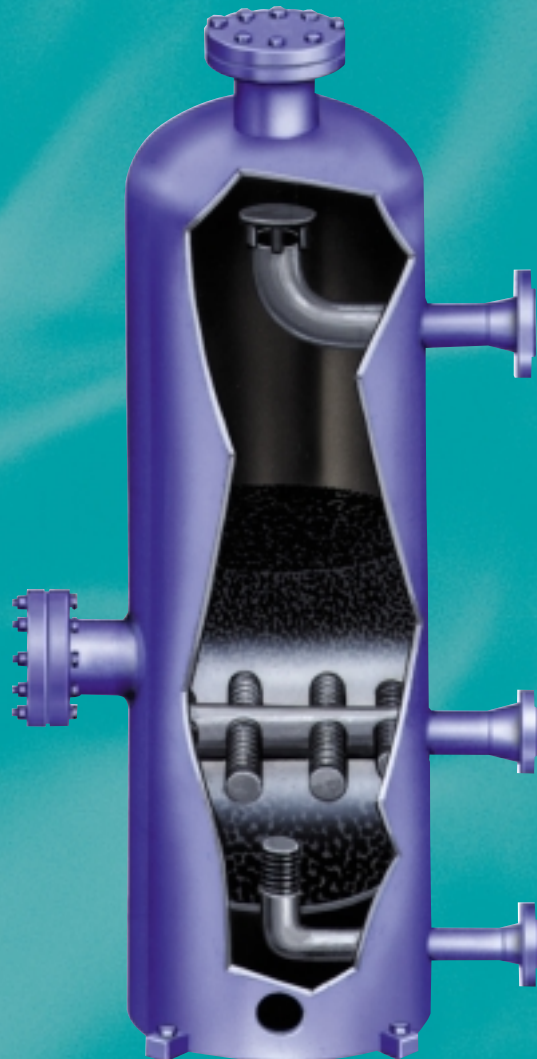
PERRY EQUIPMENT CORPORATION

ISO 9001

# SERIES 10 • 10FB • 11

---

*Efficient Adsorption of  
Liquid Impurities in  
Process Fluids*



ENGINEERED FILTRATION SOLUTIONS

**PECO ACTIVATED CARBON VESSELS** are an effective and economical method of adsorbing dissolved impurities from gas, air, water, amines, glycols and other process liquids. These impurities, if left in the solution can cause foaming, odor, contaminant build-up and other process problems.

## APPLICATIONS

PECO offers three types of carbon filters.

**The Series 10** carbon filter utilizes lignite based activated carbon type elements to remove liquid contaminants from a process liquid stream.

**The Series 10FB** fixed bed carbon filter utilizes a bed of activated carbon for high flow applications.

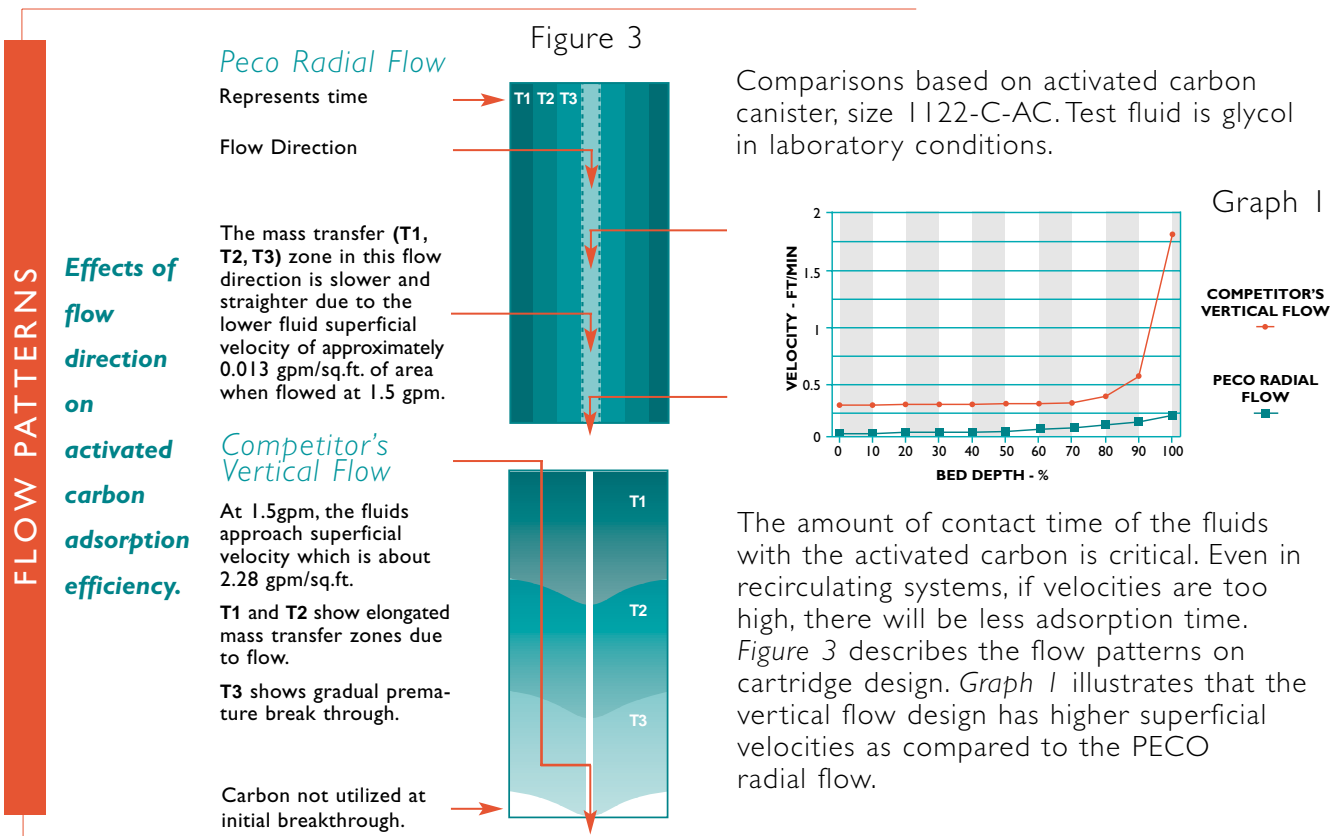
**The Series 11** utilizes the activated carbon elements and is designed for smaller, low-flow applications.

*Amine Purification*

*Glycol Purification*

*Lube Oil Purification*

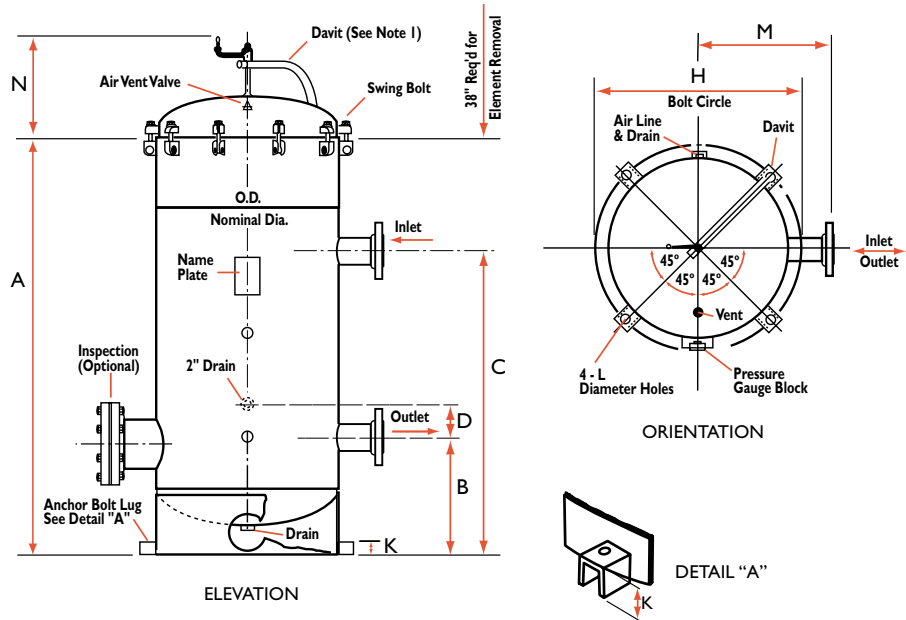
*Waste Water Purification*



# 10



## The PECO Series 10 Activated Carbon Adsorber



### SPECIFICATIONS

- Standard PECO Series 10 Carbon adsorbers are available in sizes from 14" to 66" nominal diameter as shown in the drawings.
- Standard design is in accordance with ASME, Section VIII, Division I Code for 150 psig at 220° F with 1/8" corrosion allowance.

- Materials of Construction:
  - Shell, Heads and Supports: carbon steel
  - Closure: Carbon Steel
  - Flanges: 150# ANSI RFSO slip on

#### Options

- Vessel inlet and outlet connections may be changed
- Design temperature to 300° F
- Design pressures to 1480 psig

Model	A	Model	A'	Shell Dia. in	Dimensions							
					B in	C in	D in	H in	K in	L in	M in	N in
10-1-22	47	10-1-44	69	14	18 1/2	34	5 1/2	16 1/2	2	7/8	13	19
10-2-22	49	10-2-44	71	24	20 1/2	36	5 1/2	27 1/2	3	1 1/8	18	22
10-3-22	50	10-3-44	72	28	21 1/2	37	5 1/2	31 1/2	3	1 1/8	20	23
10-5-22	51	10-5-44	73	34	22 1/2	38	5 1/2	37 1/2	3	1 1/8	23	25
10-7-22	52	10-7-44	74	36	23 1/2	39	5 1/2	39 1/2	3	1 1/8	24	26
10-8-22	53	10-8-44	75	42	24 1/2	40	5 1/2	45 1/2	3	1 1/8	27	49
10-11-22	55	10-11-44	77	48	26 1/2	42	5 1/2	51 1/2	3	1 1/8	30	51
10-15-22	56	10-15-44	78	54	27 1/2	43	5 1/2	57 1/2	3	1 1/8	33	52
10-19-22	63	10-19-44	85	60	34 1/2	50	5 1/2	63 1/2	3	1 1/8	36	54
10-23-22	65	10-23-44	87	66	36 1/2	52	5 1/2	69 1/2	3	1 1/8	39	56

Series 10FB dimensional information provided on a case by case basis.

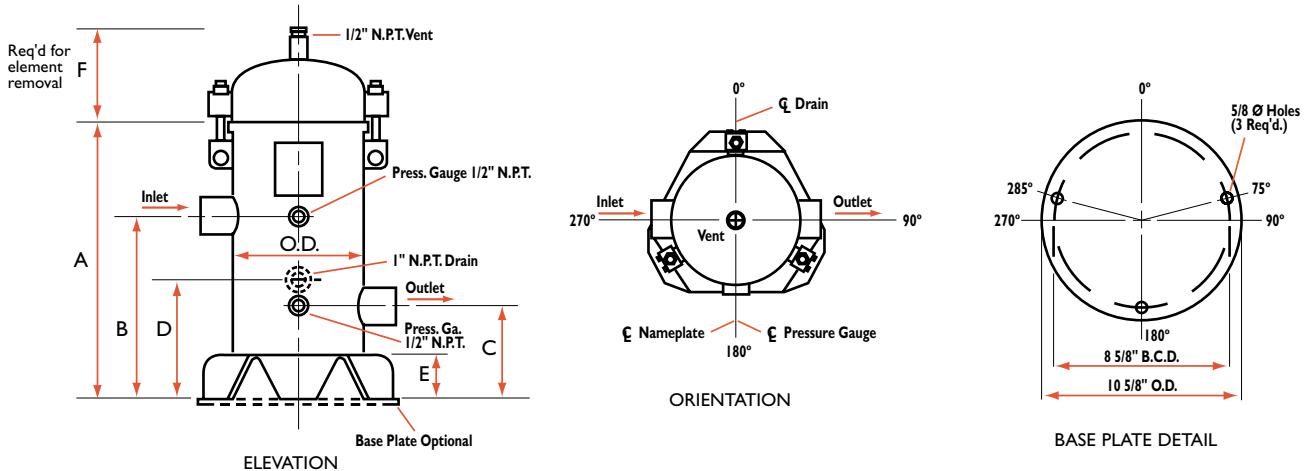
#### NOTES:

1. All models are furnished with a lid lifting davit. Some may not have a crank handle as shown. For 42 & greater shell diameter, davits furnished with a hydraulic jack.
2. Changes to standard units, including different inlet and outlet sizes, nozzle orientation, inspection opening, or special connections can be furnished at a slight additional cost.
3. Filters are designed and fabricated in accordance with ASME Section VIII Division I Code, for 150 PSIG at 220° F with 1/8" corrosion allowances, consult factory.
4. All dimensions are in inches.





The **PECO SERIES 11** is a small, inexpensive, low-flow activated carbon adsorber intended for use in small amine, glycol and water systems.

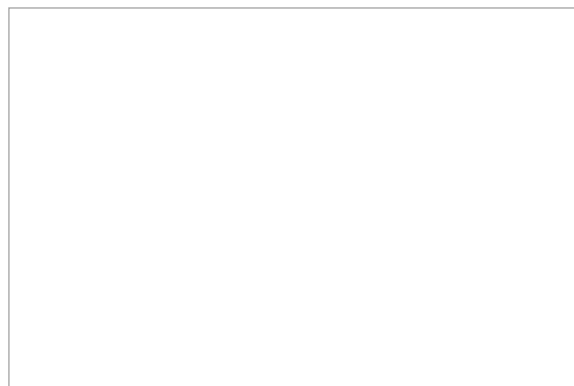


Dimensions									
Model	O.D. in	In/Out in	A in	B in	C in	D in	E in	F in	Ship Wt. Lbs
11-1-722-8-130	8 5/8	1	31	11	5	8	2 1/2	24	120
11-2-722-8-130	8 5/8	1	53	11	5	8	2 1/2	24	150



**e-mail:** [vessels@perryequipment.com](mailto:vessels@perryequipment.com)  
**web site:** [www.perryequipment.com](http://www.perryequipment.com)

Your local distributor:



Please refer to [www.perryequipment.com](http://www.perryequipment.com) for your most current literature edition and address information.