

5. BOLLFILTER

Filter Elements

Content BOLLFILTER

Filter Elements

1. BOLLFILTER

Overview Filter Elements

2. BOLLFILTER

Filter-Fabric-Table

3. BOLLFILTER

Flow Direction Filter Elements



BOLLFILTER | Filter Elements

A filtration medium in the form of a cloth insert is the heart of every fluids filter. It essentially consists of a supporting body with a filter mesh. Different designs provide different sizes of filter sur-

face. Through the optimum combination of core components every fluid can achieve the desired degree of cleanliness.

Basket element (1)

The basket element is suitable for coarse filtration or for minor contamination. The dirt collects in a basket-shaped filter insert and can be easily removed for cleaning.

Ring filter element (2)

The ring filter element is similarly constructed to the basket element, but has an additional concentric mesh cylinder, increasing the filter area by about 30%.

Multi-mantle element (3)

The multi-mantle element insert consists of several cylindrical filter mantles. These provide a large filter surface for only a small space requirement and permit the employment of fine-meshed cloths. Filtration takes place from the outside in.

Star-pleated element (4)

The star-pleated element has a large filter surface yet a small diameter due to the pleating of the filter element. This makes long cleaning intervals possible and the use of fine meshes with low pressure losses.

Filter candle insert (5)

This insert contains several mesh candle elements of the same size and mesh connected in parallel. This gives a large filter surface with a very compact design. The filter candles are outstanding for their particularly high resistance to differential pressure.

Filter candle insert for backflushing filters (6)

As in the ordinary filter candle insert, several filter candles are screwed into a single candle holder. The holder is fixed to the filter housing and remains there during backflushing in the filter chamber.

Filter cartridge (7)

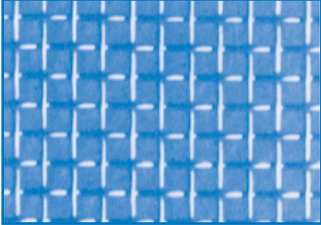

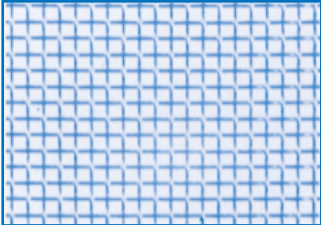
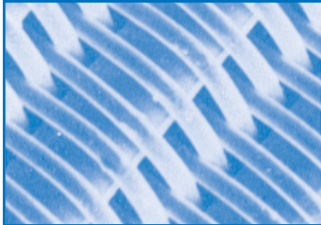
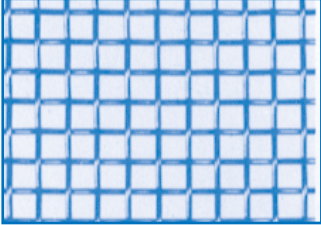

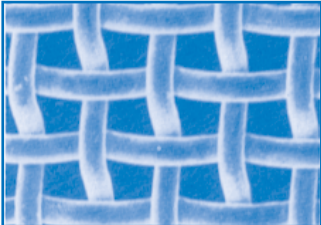
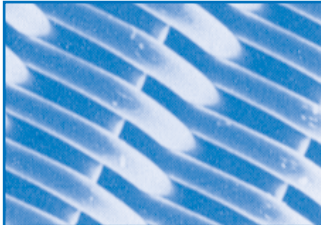

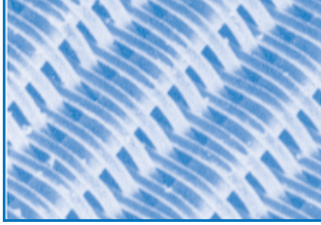
The filter cartridge consists of non-woven pleated plastic, glass fibre or paper element. It is capable of filtering very fine dirt particles.



Gewebemuster-Tabelle

Filter-Fabric-Table

Tableau des échantillons du treillis

Leinen / linen weave / lin	Webart / Type of weave / Genre	Leinen / linen weave / lin
	02 Version / Version / Version Gewebe-Nr. / Mesh-No. / Numéro du treillis Abbildung Maßeinheit / Picture scale / Image échelle Maschenweite (mm) (Kugeldurchgang) / Mesh size (mm) (sphere passing mesh) / Finesse (mm) (grain sphérique) Nominelle Filterfeinheit (µm)* / Nominal grade of filtration (µm)* / Finesse de filtration nominelle (µm)* 60 Freier Durchlass (%) / Passage area (%) / Passage libre (%)	09 150 30:1 0,1 70 32 
	03 Version / Version / Version Gewebe-Nr. / Mesh-No. / Numéro du treillis Abbildung Maßeinheit / Picture scale / Image échelle Maschenweite (mm) (Kugeldurchgang) / Mesh size (mm) (sphere passing mesh) / Finesse (mm) (grain sphérique) 750 Nominelle Filterfeinheit (µm)* / Nominal grade of filtration (µm)* / Finesse de filtration nominelle (µm)* 60 Freier Durchlass (%) / Passage area (%) / Passage libre (%)	Sondertresse** / special twist** / treillis spécial** 11 128/18 10:1 0,08 60 44 
	04 Version / Version / Version Gewebe-Nr. / Mesh-No. / Numéro du treillis Abbildung Maßeinheit / Picture scale / Image échelle Maschenweite (mm) (Kugeldurchgang) / Mesh size (mm) (sphere passing mesh) / Finesse (mm) (grain sphérique) 500 Nominelle Filterfeinheit (µm)* / Nominal grade of filtration (µm)* / Finesse de filtration nominelle (µm)* 54 Freier Durchlass (%) / Passage area (%) / Passage libre (%)	Fünfschaft-Atlas-Bindung / five heddle cloth / satin de 5 30 5110 30:1 0,08 60 20 
	05 Version / Version / Version Gewebe-Nr. / Mesh-No. / Numéro du treillis Abbildung Maßeinheit / Picture scale / Image échelle Maschenweite (mm) (Kugeldurchgang) / Mesh size (mm) (sphere passing mesh) / Finesse (mm) (grain sphérique) 250 Nominelle Filterfeinheit (µm)* / Nominal grade of filtration (µm)* / Finesse de filtration nominelle (µm)* 38 Freier Durchlass (%) / Passage area (%) / Passage libre (%)	Sondertresse** / special twist** / treillis spécial** 26 155/19 30:1 0,06 45 44 
	06 Version / Version / Version Gewebe-Nr. / Mesh-No. / Numéro du treillis Abbildung Maßeinheit / Picture scale / Image échelle Maschenweite (mm) (Kugeldurchgang) / Mesh size (mm) (sphere passing mesh) / Finesse (mm) (grain sphérique) 150 Nominelle Filterfeinheit (µm)* / Nominal grade of filtration (µm)* / Finesse de filtration nominelle (µm)* 35 Freier Durchlass (%) / Passage area (%) / Passage libre (%)	Sondertresse** / special twist** / treillis spécial** 15 208/26 30:1 0,048 30 44 

* bei einer Rückhalterate von 90%
 * at a retention rate of 90%
 * compte tenu d'une retenue de 90%

** Werkstoff der Gewebedrähte: Cr Ni Mo Stahl, Werkstoff-Nr. 1.4401/1.4301
 ** Material of wires: Cr Ni Mo steel, Material No. 1.4401/1.4301
 ** Matière des fils treillis: acier inox Material N. 1.4401/1.4301

*** Werkstoff der Gewebedrähte: Polyester
 *** Material of wires: polyester
 *** Matière des fils treillis: polyester

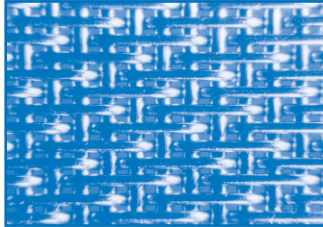


Gewebemuster-Tabelle

Filter-Fabric-Table

Tableau des échantillons du treillis

Fünfschaft-Atlas-Bindung / five heddle cloth / satin de 5



32
5150
30:1
0,05
30
10

Webart / Type of weave / Genre

Version / Version / Version

Gewebe-Nr. / Mesh-No. / Numéro du treillis

Abbildung Maßeinheit / Picture scale / Image échelle

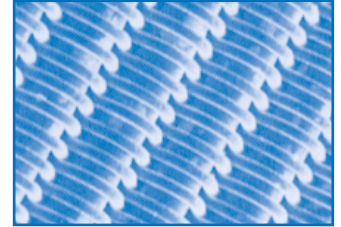
Maschenweite (mm) (Kugeldurchgang) / Mesh size (mm) (sphere passing mesh) / Finesse (mm) (grain sphérique)

Nominelle Filterfeinheit (µm)* / Nominal grade of filtration (µm)* / Finesse de filtration nominelle (µm)*

Freier Durchlass (%) / Passage area (%) / Passage libre (%)

Sondertresse** / special twist** / treillis spécial**

21
250/40
30:1
0,025
10
17,4



Köper / twilled weave / croisé



17
300/250
30:1
0,037
25
20

Webart / Type of weave / Genre

Version / Version / Version

Gewebe-Nr. / Mesh-No. / Numéro du treillis

Abbildung Maßeinheit / Picture scale / Image échelle

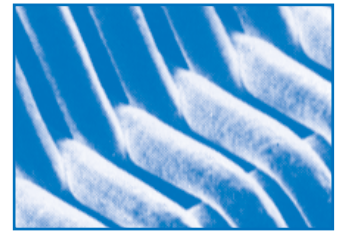
Maschenweite (mm) (Kugeldurchgang) / Mesh size (mm) (sphere passing mesh) / Finesse (mm) (grain sphérique)

Nominelle Filterfeinheit (µm)* / Nominal grade of filtration (µm)* / Finesse de filtration nominelle (µm)*

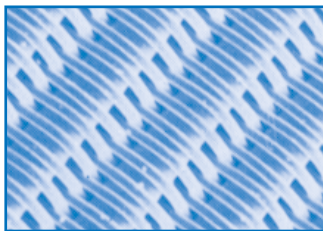
Freier Durchlass (%) / Passage area (%) / Passage libre (%)

Sondertresse / special twist / treillis spécial

25
660/63
230:1
0,010
5



Sondertresse** / special twist** / treillis spécial**



19
294/31
30:1
0,034
20
44

Webart / Type of weave / Genre

Version / Version / Version

Gewebe-Nr. / Mesh-No. / Numéro du treillis

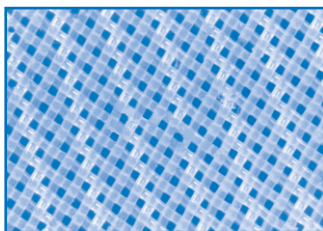
Abbildung Maßeinheit / Picture scale / Image échelle

Maschenweite (mm) (Kugeldurchgang) / Mesh size (mm) (sphere passing mesh) / Finesse (mm) (grain sphérique)

Nominelle Filterfeinheit (µm)* / Nominal grade of filtration (µm)* / Finesse de filtration nominelle (µm)*

Freier Durchlass (%) / Passage area (%) / Passage libre (%)

Köper*** / twilled weave*** / croisé***



20
350/350
30:1
0,034
20
24

Webart / Type of weave / Genre

Version / Version / Version

Gewebe-Nr. / Mesh-No. / Numéro du treillis

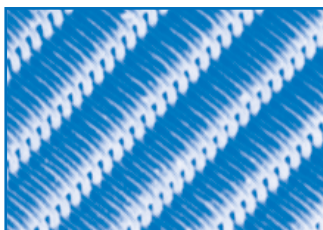
Abbildung Maßeinheit / Picture scale / Image échelle

Maschenweite (mm) (Kugeldurchgang) / Mesh size (mm) (sphere passing mesh) / Finesse (mm) (grain sphérique)

Nominelle Filterfeinheit (µm)* / Nominal grade of filtration (µm)* / Finesse de filtration nominelle (µm)*

Freier Durchlass (%) / Passage area (%) / Passage libre (%)

Sondertresse** / special twist** / treillis spécial**



24
400/40
30:1
0,025
10
44

Webart / Type of weave / Genre

Version / Version / Version

Gewebe-Nr. / Mesh-No. / Numéro du treillis

Abbildung Maßeinheit / Picture scale / Image échelle

Maschenweite (mm) (Kugeldurchgang) / Mesh size (mm) (sphere passing mesh) / Finesse (mm) (grain sphérique)

Nominelle Filterfeinheit (µm)* / Nominal grade of filtration (µm)* / Finesse de filtration nominelle (µm)*

Freier Durchlass (%) / Passage area (%) / Passage libre (%)

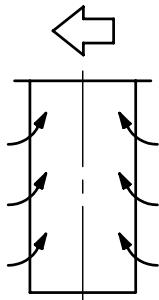
* bei einer Rückhalterate von 90%
* at a retention rate of 90%
* compte tenu d'une retenue de 90%

** Werkstoff der Gewebedrähte: Cr Ni Mo Stahl, Werkstoff-Nr. 1.4401/1.4301
** Material of wires: Cr Ni Mo steel, Material No. 1.4401/1.4301
** Matière des fils treillis: acier inox Material N. 1.4401/1.4301

*** Werkstoff der Gewebedrähte: Polyester
*** Material of wires: polyester
*** Matière des fils treillis: polyester



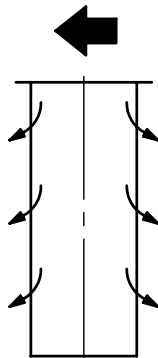
DURCHFLUSSRICHTUNG
FLOW DIRECTIONS
DIRECTION DE PASSAGES



MANTELSIEB
MULTIMANTLE FILTER-ELEMENT
PANIER À MANTÉAUX

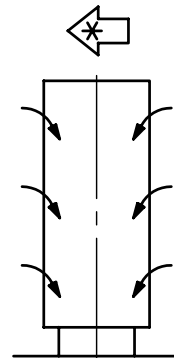
GEWEBEEINSTECKERZEN-EINSATZ
FILTER-CANDLE INSERT
ÉLÉMENTS À BOUGLES'

RUECKSPUELBARES KORBSIEB
BACK WASH FILTER-ELEMENT
PANIER POUR RINCAGE PAR CONTRE-COURANT



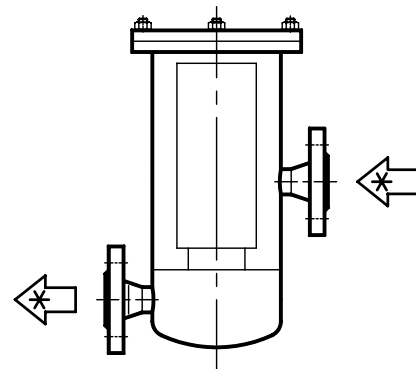
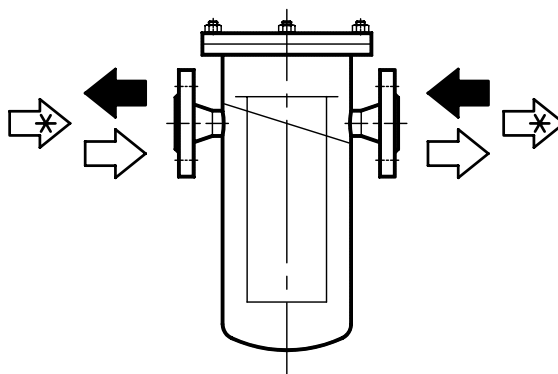
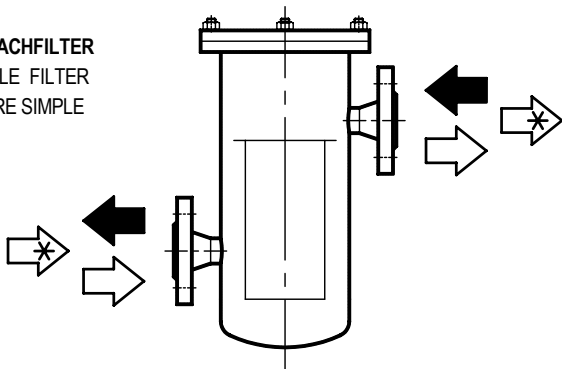
KORBSIEB
BASKET FILTER-ELEMENT
PANIER À CORBEILLE

RINGSIEB
FILTER-ELEMENT
PANIER À ANNEAUX



STERNSIEB
STAR PLEATED-ELEMENT
TREILLIS PLISSÉ

EINFACHFILTER
SINGLE FILTER
FILTRE SIMPLE



DOPPELFILTER
DUPLEX FILTER
FILTRE DOUBLE

