



**ProCOMP**

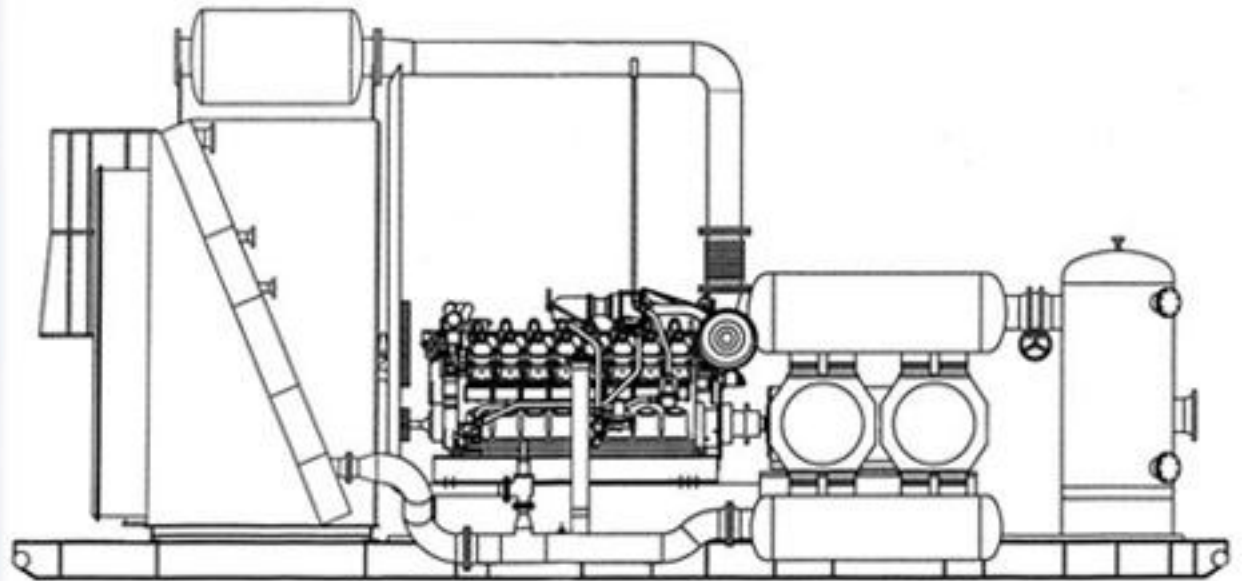
---

**V K O**



ISO 9001

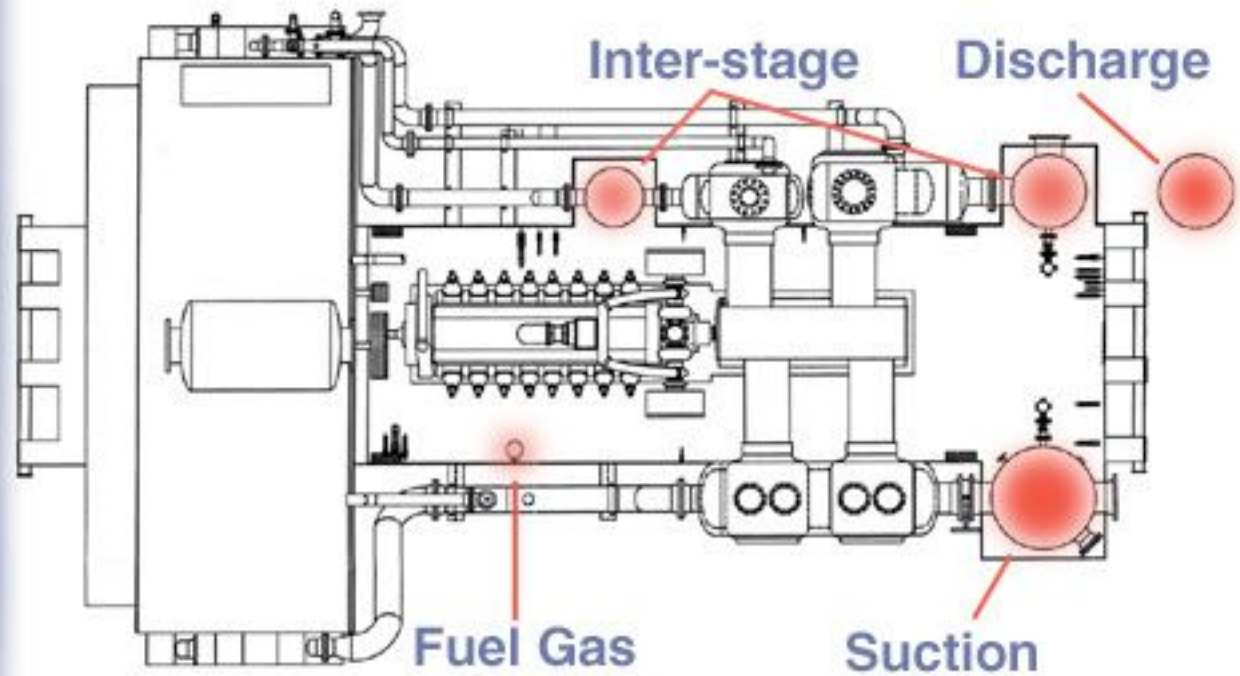
The Peco Pro-Comp Line was designed specifically for compression applications in production and gathering.





ISO 9001

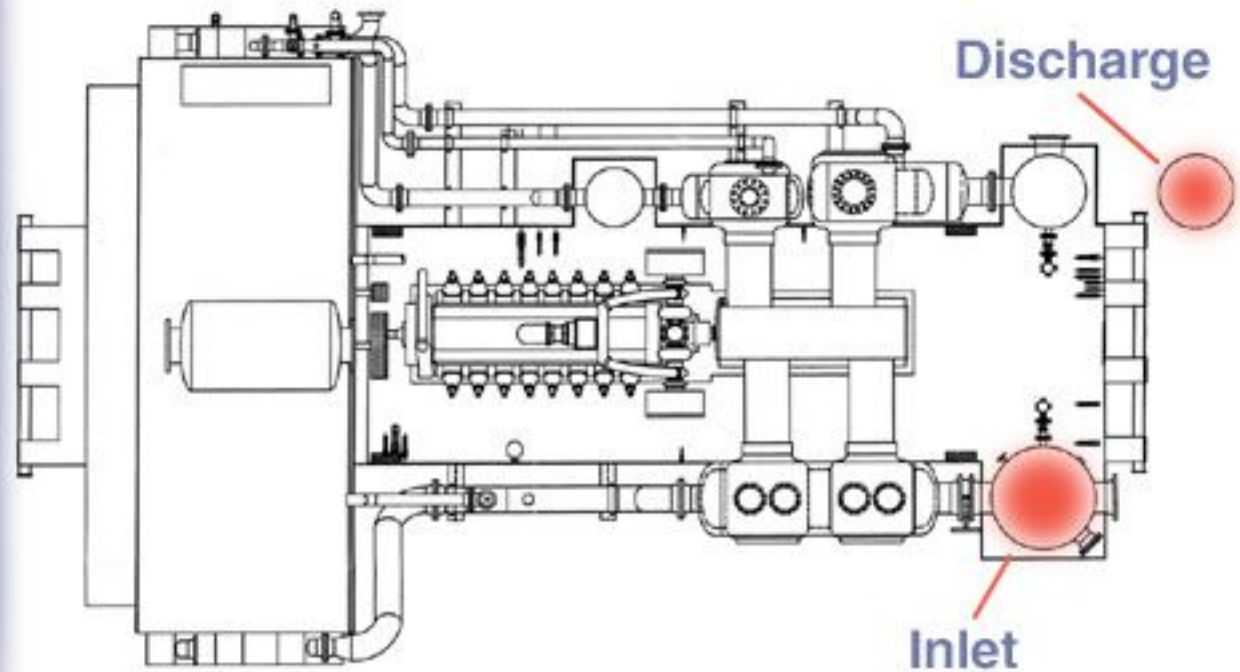
Pro-Comp products can be found on suction, discharge, inter-stage and fuel gas.





ISO 9001

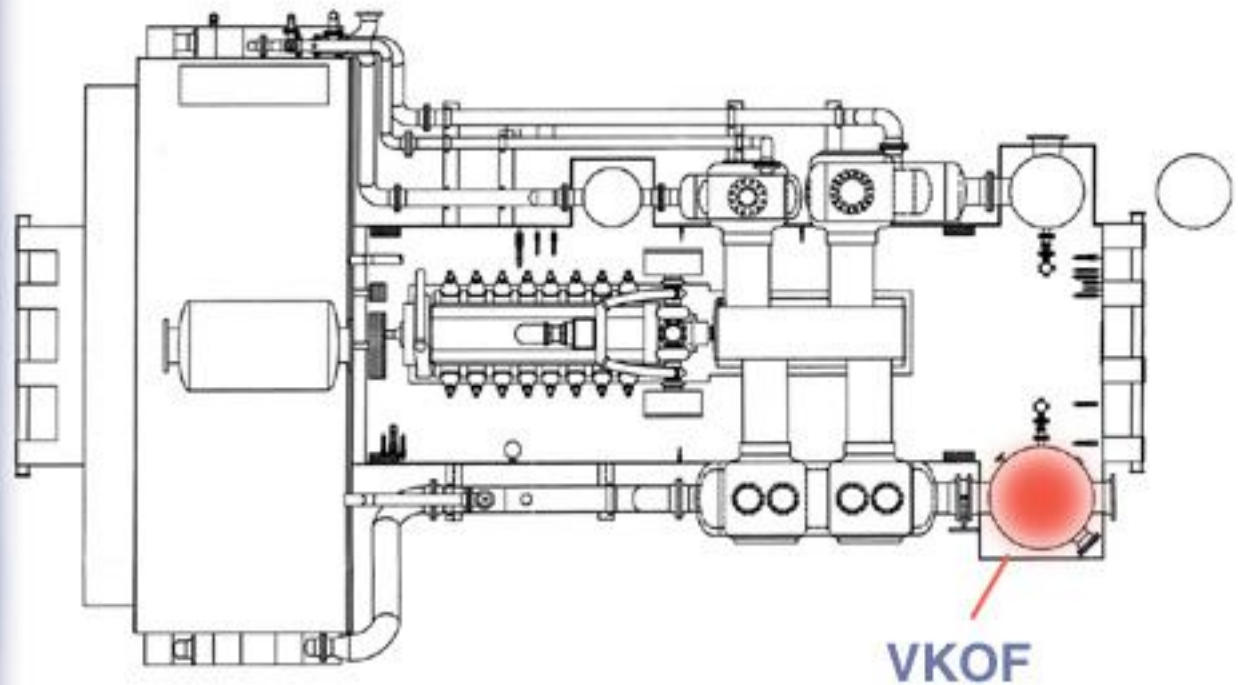
The Inlet and Discharge are critical to operational efficiency and operational cost management.





ISO 9001

To address the inlet,  
Peco developed the  
Vertical Knockout  
Filter or VKOF.





ISO 9001

The VKOF features  
Dynamic  
Separation  
Technology.

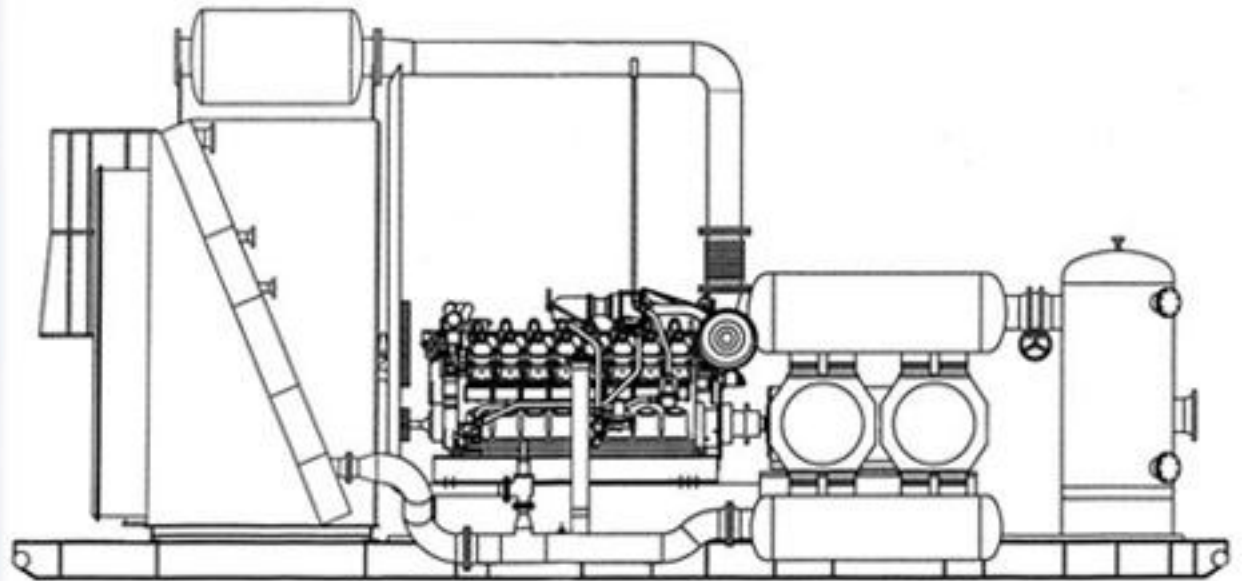
Dynamic  
Separation  
Technology





ISO 9001

Protecting critical operational equipment extends on-stream life and lengthens the period between overhauls saving thousands of dollars over the lifetime of the equipment.

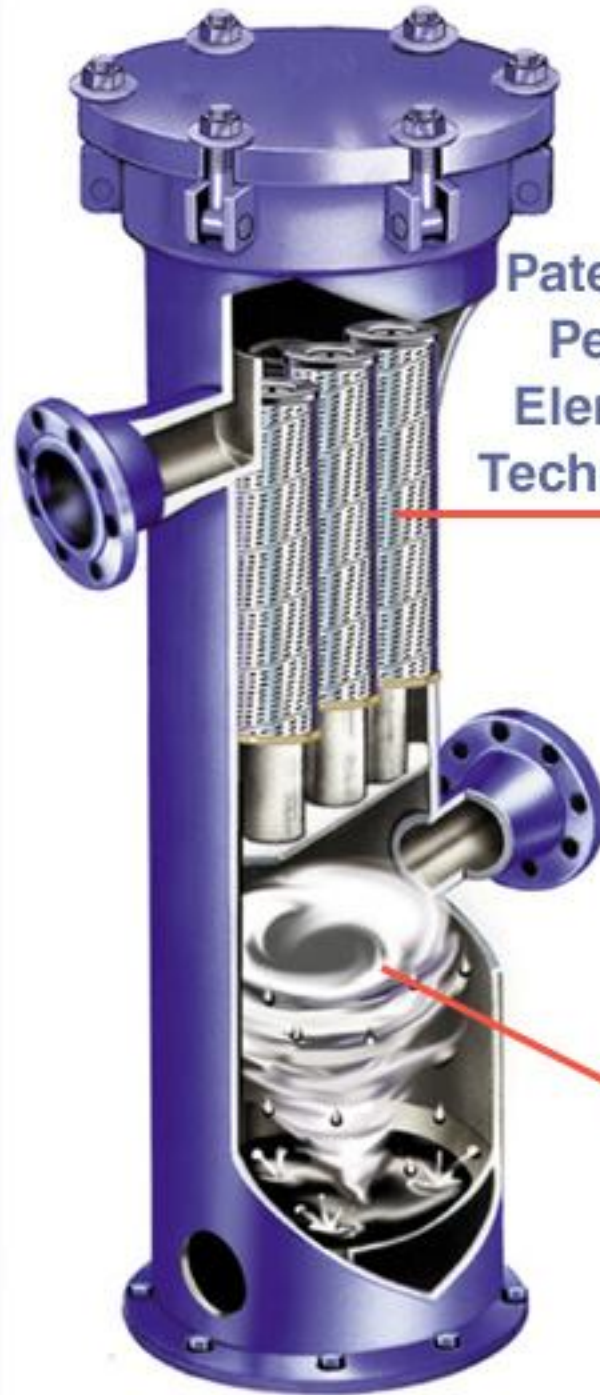






ISO 9001

Dynamic Separation Technology combined with patented Peach element technology delivers clean gas to the compressor suction inlet.



Patented Peach Element Technology

Dynamic Separation Technology





ISO 9001

By eliminating  
common  
contaminants...

**Salts**

**Iron Sulfides**

**Asphaltenes**

**Coal Fines**



ISO 9001

By eliminating  
common  
contaminants...

Salts

Iron Sulfides

Asphaltines

Coal Fines



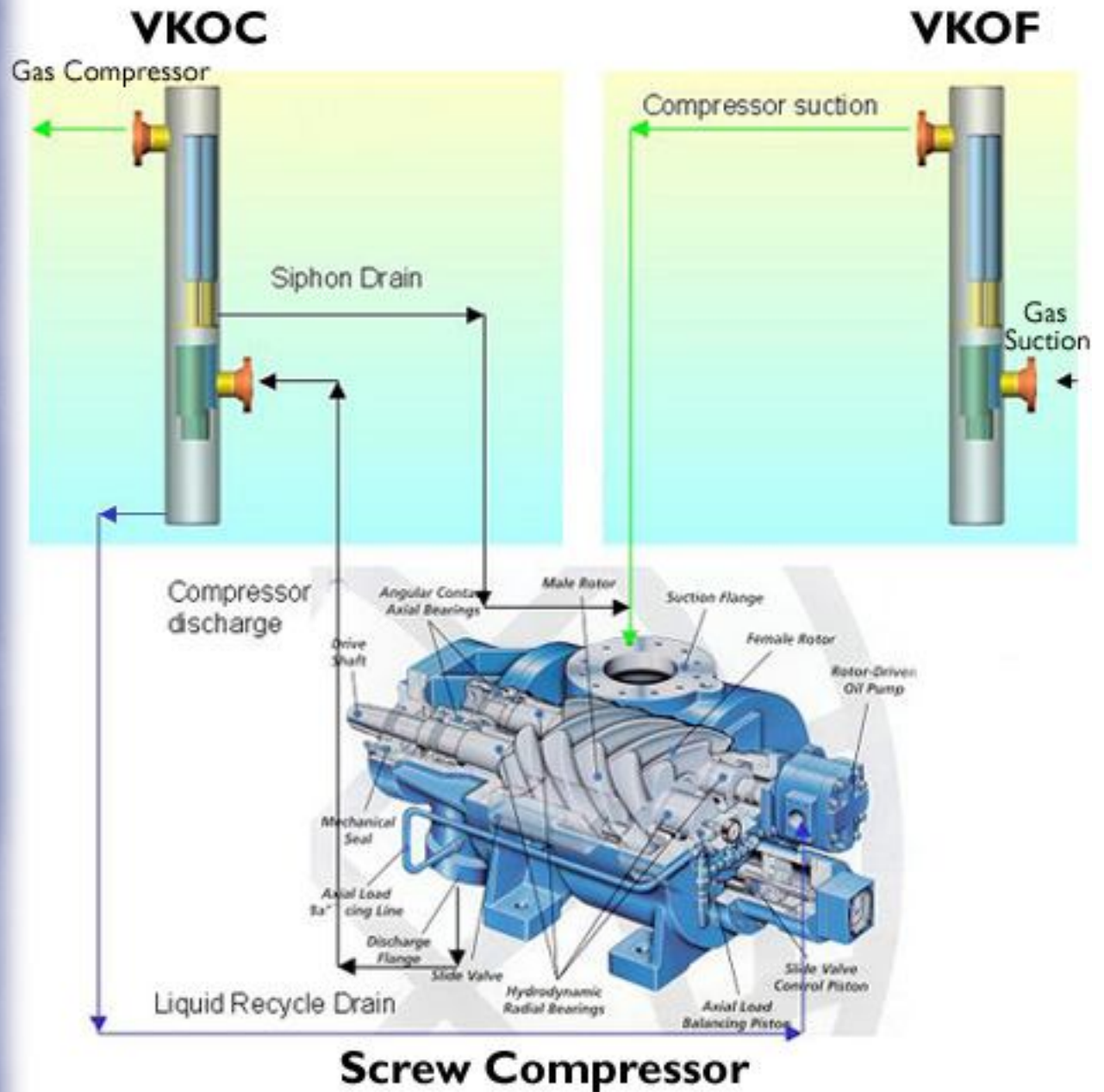
ISO 9001

By eliminating  
common  
contaminants...



ISO 9001

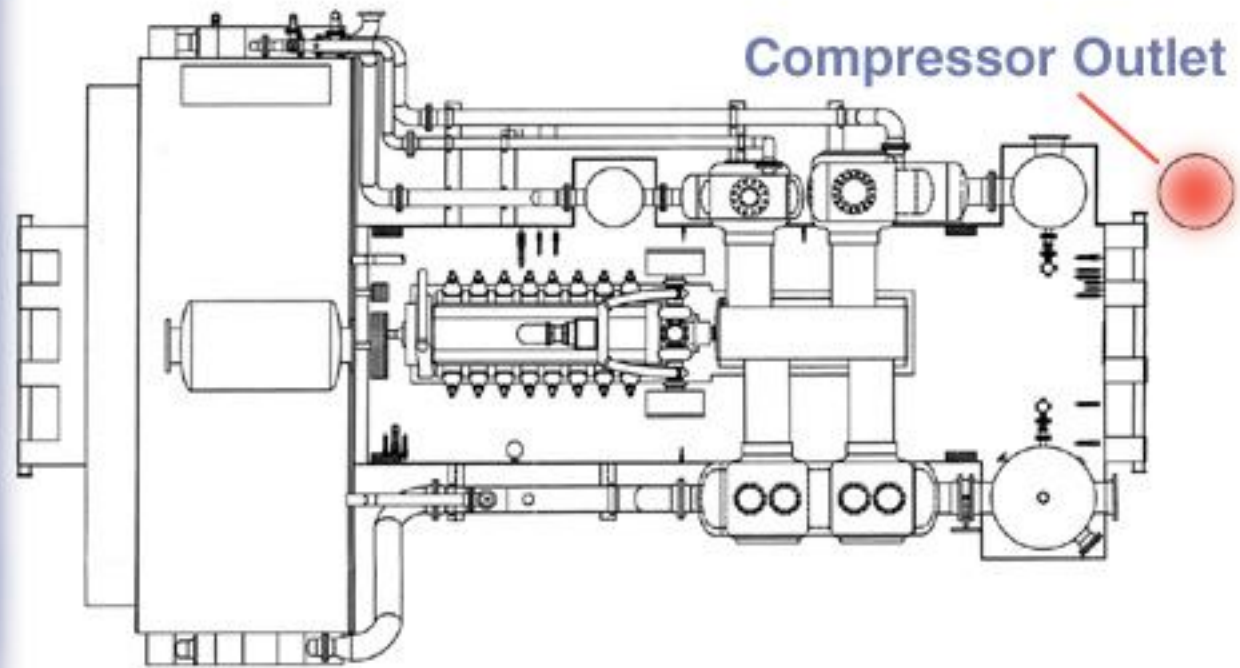
...the VKOF protects critical wear parts like the rotors & bearings on Screw Compressors and valve plates & cylinder walls on Reciprocating units.





ISO 9001

With the increasing use of oil flooded rotary products in low pressure wells, oil-gas separation at the compressor outlet becomes another area critical to cost control.





ISO 9001

Lube oil that  
is critical to  
the operation  
of screw  
compressors  
is costly.





ISO 9001

Losing even a  
pint a day can  
add hundreds of  
dollars per month  
in operational costs.



= \$\$\$\$





ISO 9001

For this application,  
Peco developed the  
Pro-Comp Vertical  
Knockout Coalescer  
- VKOC.





ISO 9001

The VKOC features the same Dynamic Separation Technology coupled with the patented Peach Coalescing element design.



Patented Peach Element Technology

Dynamic Separation Technology





ISO 9001

The Pro-Comp  
VKOC captures  
entrained lube oil  
in the compressor  
discharge down  
to 1 ppm.



→ 1 ppm

up to 100  
gallons / minute



ISO 9001

The collected oil is returned to the oil system. By reducing the amount of oil loss, monthly operational costs are reduced significantly.





ISO 9001

Together, the  
Peco Pro-Comp  
VKOC & VKOF  
can reduce  
operating costs  
and extend  
on-stream life.



**Save \$\$\$**

**Increase Profit**



**Perry Equipment Corporation**

P.O. Box 640 Mineral Wells, Texas 76068

800.877.PECO

web site: [www.pecousa.com](http://www.pecousa.com)